

## Temperature Resistant

**Temperature Resistant Labels:** P-touch laminated labels, slightly roughened with abrasive paper, were attached to stainless steel then heated and cooled. After 240 hours at -80°C no noticeable change in the tapes' adhesive or colour had occurred. After 240 hours at 150°C, despite slight discolouration, the text on the labels remained completely intact\*. The black on matt silver tapes are most resistant to high temperatures.

\*When tape is subject to extremely high temperatures for long periods, the laminate film may be separated or discoloured, or it may shrink.  
For more detailed information on the tests performed, please contact your local Brother office.

*P-touch*

3.5mm	6mm	9mm	12mm	18mm	24mm	36mm
Laminated 8 metres						
TZ 111	TZ 121 TZ 122 TZ 123 TZ 125	TZ 131 TZ 132 TZ 133 TZ 135	TZ 141 TZ 142 TZ 143 TZ 145	TZ 151 TZ 152 TZ 153 TZ 155		TZ 161
TZ 211	TZ 221 TZ 222 TZ 223 TZ 224	TZ 231 TZ 232 TZ 233 TZ 234	TZ 241 TZ 242 TZ 243 TZ 244	TZ 251 TZ 252 TZ 253 TZ 254		TZ 261
TZ 315	TZ 325 TZ 421 TZ 521	TZ 335 TZ 431 TZ 531	TZ 345 TZ 441 TZ 541	TZ 355 TZ 451 TZ 551		TZ 365
TZ 611	TZ 621 TZ 721	TZ 631 TZ 731	TZ 641 TZ 741	TZ 651 TZ 755		TZ 661
Fluorescent - 5 metres Laminated						
		TZ D31		TZ D51		
		TZ C31		TZ C51		
		TZ D31		TZ D51		
Matt - 8 metres Laminated						
		TZ M31		TZ M51		
		TZ M31	TZ M91	TZ M91		TZ M961
Non-Laminated - 8 metres						
TZ N201**						
Flexible ID tape - 8 metres Laminated						
TZ FX111	TZ FX121	TZ FX131	TZ FX141	TZ FX151		TZ F161
TZ FX211	TZ FX221	TZ FX231	TZ FX241	TZ FX251		TZ F261
TZ FX611	TZ FX621	TZ FX631	TZ FX641	TZ FX651		TZ F661
Strong Adhesive - 8 metres Laminated						
TZ S211	TZ S221	TZ S231	TZ S241	TZ S251		
TZ S611	TZ S621	TZ S631	TZ S641	TZ S651		TZ S661
		TZ S131	TZ S141	TZ S151		TZ S161
Iron on Fabric - 3 metres						
		TZ FA3				
		TZ FAE3				
		TZ FA53				
		TZ FA63				
Tampers Evident - 8 metres Laminated						
			TZ SE4			
High Grade - 8 metres Laminated*						
			HG 241			
Print head cleaning cassette - approx. 100 uses						
		TZ CL3	TZ CL4			TZ CL6

Actual tape colours may differ slightly from the printed colours. Brother TZ tapes are supplied in standard 8m lengths. Exceptions are fluorescent (5m) and iron-on fabric tape (3m).

\* Only for use with the PT-9500PC

\*\* Only for use with machines with 3.5mm tape capability

Please refer to the Options/Consumables page at [www.brother.com.au](http://www.brother.com.au) specific to your P-touch model to determine the tape width sizes compatible with your labeller.

Contact:

The Brother logo, consisting of the word "brother" in a bold, blue, sans-serif font, followed by a registered trademark symbol (®).

**Brother International (Aust) Pty Ltd**

Web-site: [www.brother.com.au](http://www.brother.com.au) Technical Help Web-site: <http://solutions.brother.com>  
**NSW/ACT** 11 Talavera Road, Macquarie Park NSW 2131 Phone: (02) 9887 4344 Fax: (02) 9870 7234  
**VIC** 1/733 Whitehorse Rd, Mont Albert VIC 3127 Phone: (03) 9899 4844 Fax: (03) 9899 4833  
**QLD/NT** 245 Riverside Drive, West End QLD 4101 Phone: (07) 3255 1211 Fax: (07) 3255 1911  
**SA/TAS** 4, 13 King William Rd, Unley SA 5061 Phone: (08) 8272 1300 Fax: (08) 8272 1199  
**WA** 117 Great Eastern Highway, Belmont WA 6104 Phone: (08) 9478 1955 Fax: (08) 9277 2177

All specifications subject to change without notice

**P-touch**  
**EDGE**  
**PT-7600**

## Electronic labeller

Brother | P-touch 7600

## Technical Information

## Hardware

<b>Housing Dimensions</b>	134mm(W) x 235mm(D) x 78mm(H)
<b>Housing Weight</b>	610g (without batteries and tape cassette)
<b>Housing Design</b>	Handheld Type
<b>Housing Colour</b>	Orange / Black
<b>Keyboard</b>	ABCD Layout
<b>Number of Keys</b>	56 keys
<b>Cutter</b>	Manual
<b>Power</b>	Rechargeable Batteries Pack (BA-7000), 6 x AA Alkaline (LR6) Batteries, 6 x AA Rechargeable Batteries or AC adaptor
<b>LCD</b>	132 x 48 dots Graphic Display with Backlight
<b>Included Items</b>	Carrying Case, User's Guide, Adjustable Neck Strap, Rechargeable Batteries Pack (BA-7000), AC- Adapter, CD-ROM, USB Cable, 12mm Black on White Flexi-ID cable 8m wrapping tape (TZ-FX231)
<b>Tape Type</b>	TZ-tape
<b>Tape Size</b>	6 / 9 / 12 / 18 / 24 mm
<b>Print Head</b>	180 dpi
<b>Print Speed</b>	10mm / second


## Firmware

<b>Built in Fonts</b>	Helsinki
<b>Characters</b>	373
<b>Symbols</b>	164
<b>Max. Print Height</b>	18mm
<b>Number of lines printable</b>	Max.7 lines
<b>Text Buffer</b>	500 characters
<b>Memory</b>	Max. 2,000 characters
<b>Character Sizes (pts)</b>	Auto, 6, 9, 12, 18, 24, 36, 48
<b>Character Widths</b>	Normal / Narrow / Thin / Wide
<b>Type Styles</b>	Normal / Bold / Outline / Italic / Italic Bold / Italic Outline
<b>Framing</b>	15 kinds
<b>Barcodes</b>	COD39, CODE128, EAN8, EAN13, EAN128, UPC-A, UPC-E, I-2/5(1TF), CODABAR
<b>Mirror Printing</b>	Yes
<b>Block Printing</b>	Yes
<b>Repeat Printing</b>	Yes (1-99)
<b>Numbering</b>	Yes (1-99)
<b>Database Printing</b>	Yes
<b>Tape Margin Settings</b>	2mm - 99mm
<b>Transfer Function</b>	Download Templates and Image Characters (Max.10) Download Database x 1
<b>Battery Weak Indication</b>	Yes
<b>Auto Power Off</b>	Yes
<b>Print Image ( Preview )</b>	Only Layout Preview

## Software

<b>Label Editing Software</b>	P-touch Editor ver. 5.0, P-touch Library 2.1
<b>Operating System</b>	Windows® 2000 Professional / XP / Windows Vista®
<b>Interface</b>	USB Port (USB Spec. 1.1 or 2.0 protocol) for transfer only

 Always at your side

			
Choosing the correct TZ label tape for the job is crucial. This is why Brother has a range of tapes specifically designed for different labelling applications. By using our unique lamination process and specially developed adhesives, you can be sure that your labels will withstand the harshest conditions, year after year.			
	FLAT SURFACE	LARGE CURVED SURFACE	SMALL CURVED SURFACE
TZ Laminated Tapes: Unlike ordinary labels, our unique laminated tape technology ensures that your text is sandwiched between a layer of super-clear polyethylene and the durable base layer. This makes these virtually indestructible labels resistant to sunlight, abrasion, moisture, chemicals, heat and cold.	Smooth	●	▲
	Textured	×	×
Strong Adhesive Tape: Our strong adhesive tape demonstrates 50% more adhesive strength on average compared to our standard tape, and is suitable for more demanding applications.	Smooth	●	×
	Textured	●	×
Flexible ID Tapes: Designed for wrapping around small diameter curved surfaces such as power cables and conduit/pipes they are also perfect where the label needs to be stuck onto itself (flagging).	Smooth	●	●
	Textured	×	●
● Recommended ▲ Acceptable × Not Recommended			

## Built for professional use

The PT-7600 comes packed with features and functions that have been developed as a result of listening to our customers needs.

With a rugged and durable design, the machine comes with a protective rubber grip that not only offers protection, but also helps ensure the machine won't slip from your grasp. To further protect the unit, it is supplied in a robust carry case with storage space for additional tapes, accessories and the AC Adaptor.

### P-touch 7600 includes:

- PT-7600 Industrial labelling tool with rubber impact guards
- 12mm Black on White Flexi-ID cable wrapping 8m tape
- Handy Carry Case
- Built-in rechargeable battery pack
- AC Adaptor
- USB cable
- Label editing / design software
- Neck/Hand Strap



## Creating your own custom labels offers four key benefits to electricians, cable installers, and others in the professional trade:

### ① Professional Installation

Impress your customers with a professional, quality installation by creating detailed, easy-to-read labels that contain symbols, and even your own company logo.

### ② Ease of Maintenance

Reduce the time needed to diagnose faults by using Brother P-touch machines to clearly label cables and electrical or network components.

### ③ Ease of Operation

Make life easy for your customers. Use Brother P-touch labels to clearly identify electrical components, network / telephone ports and faceplates, ensuring ease of operation and reducing the possibility of mistakes.

### ④ Safety

Create professional warning signs and information labels to instruct your customers on key safety points.

## P-touch PT-7600

### E Easy to use, just type and print a label!

- Intuitive interface makes it simple to design the perfect label
- Smart tape technology automatically selects the font size and length of a label
- Simple label design tool helps you create the right label for your specific application

### D Durable construction with rubber impact guards protects from expected bumps and rough handling

- Portable handheld design, weighs only 610g
- Comes with protective carrying case to hold labeler, AC adapter, batteries and extra tapes

### G Great performance at an affordable price

- Versatile font options – From 1 line up to 62 point size, to 7 lines with up to 26 rotated characters\* per line
- Prints industry standard (ANSI X3.182) bar codes
- Multiple power choices – batteries or AC adapter

### E Extreme conditions requires tough P-touch laminated labels

- Ideal for commercial and industrial applications
- Includes UL recognized (UL969) labels for indoor/outdoor applications
- Resists extreme temperatures, chemical exposure, moisture, fading and abrasion

\*Requires global character width set to narrowest setting

## Benefits and features designed for electricians and cable installers

### Easy-to-read backlit LCD display panel



### Automatic numbering

Quickly and easily print labels that contain incrementing numbers. Perfect to identify a mass of cables!

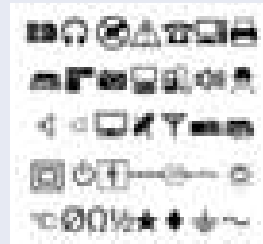


### Advanced cutter system

To ensure that your label is printed at the correct length, the PT-7600 has a special cutter system that will pause the printing at the required cut point. No scissors are required to cut the tape to the correct length!

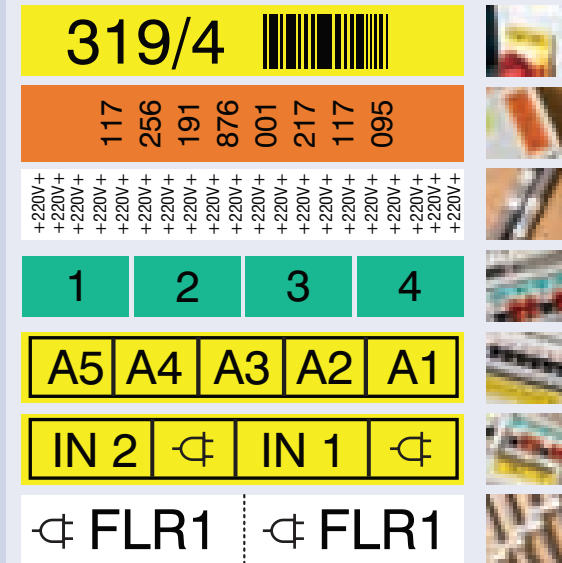
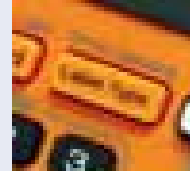
### Symbols

148 symbols (including typical Audio/Video symbols) are included as standard.



### Easy label creation

A dedicated “Label Type” button allows you to quickly create labels for the most common electrical labelling applications.



### Rechargeable Battery

Supplied with a rechargeable battery pack, the unit is easily charged overnight by simply plugging the AC Adaptor into the labelling machine, which helps to reduce the environmental impact and also saves you money. No more buying expensive batteries!

### Create custom content and upload to the memory of the PT-7600

The PT-7600 includes a USB port and cable to allow connection to a Microsoft Windows based PC. Create your own label layouts and add your own AV and electrical symbols or your company logo using the supplied label design software. There are ten special memory locations on the device for storing your own customised images and label designs, so they are available whenever and wherever you want them.

