

P-touch QL-550



### Choose the right label for the job

The P-touch QL-550 offers a wide range of labels and tapes to suit almost any usage.



### DK LABEL DK Die-Cut Labels (Thermal Paper)

SENDER:  
John O'Brien  
8 The Grange, Slattocks  
Midton, Manchester. M03 1RV

Marie Hague  
281 Bank St  
Broadhaven  
Lancashire  
SK15 8EX

Dominic Rash  
27 Fairtrees Rd  
Peteston  
Lancashire  
SK8 1EW

**VISITOR**  
Mr. B. Lee  
International Corp  
13 MAR  
2005

Standard address labels  
DK-11201 | 400 labels/roll 29mm x 90mm

Small address labels  
DK-11209 | 800 labels/roll  
29mm x 62mm

Large address labels  
DK-11208 | 400 labels/roll 38mm x 90mm



Mike Bates Estates  
Tame House, Denshaw,  
Lincoln LI94 1NX

CLIENT DATA 2005 A-M



**Durable Film**

Mr. M Briggs  
14 Woodland Road  
Wokingham  
**101-66193-498**

Multi-purpose return labels  
DK-11204 | 400 labels/roll 17mm x 54mm

File/folder labels  
DK-11203 | 300 labels/roll 17mm x 87mm

CD/DVD labels  
DK-11207 | 100 labels/roll 58mm Ø

Shipping labels  
DK-11202 | 300 labels/roll 62mm x 100mm

### DK TAPE DK Continuous Length Tapes (Thermal Paper/Durable Film)

**89/PHG**

Narrow width tape  
White tape DK-22214 12mm x 30.48m (Thermal Paper)

**CONFERENCE ROOM "AZURE"**

Medium width tape  
White tape DK-22210 29mm x 30.48m (Thermal Paper)  
White tape DK-22211 29mm x 15.24m (Durable Film)

**NO SMOKING**

Wide tape  
White tape DK-22205 62mm x 30.48m (Thermal Paper)  
White tape DK-22212 62mm x 15.24m (Durable Film)  
Yellow tape DK-22606 62mm x 15.24m (Durable Film)  
Clear tape DK-22113 62mm x 15.24m (Durable Film)

**DANGER!**

Continuous tape is ideal for creating signage and banners. With continuous tape you can print labels 62mm wide and up to 1 metre long.

- Contents**
- 2 Starter Rolls
    - 1 x DK Die-Cut Standard Address Roll (100 labels, 29mm x 90mm)
    - 1 x DK Continuous Paper Tape Roll (62mm x 8m)
  - Quick Start Guide
  - Label Catch Tray
  - Cleaning Sheet (for print roller)
  - CD Rom (Software/Driver/User Guide)
  - AC Power Cord
  - USB Cable

Contact:

System Requirements	
Computer	PC compatible
Operating System	Windows: 98SE/ME/2000 Pro/XP Pro/XP Home
CPU	Intel® Pentium® 266 MHz or higher (700MHz or higher recommended)
Memory (RAM)	Win 98SE, Me: 64MB or more required Win 2000 Pro, XP: 128MB or more required
Hard Disk Free Space	70MB or more
Interface	USB 1.1 or later specification
Other	CD-ROM drive for installation
Monitor	SVGA, high color or higher graphics card

All specifications subject to change without notice.

www.brother.com

At your side.  
**brother**

At your side.  
**brother**

**P-touch**  
**QL-550**

Professional Labelling Solution

QL-550  
**AUTOCUTTER**

Brother P-touch QL-550



UP TO **50**  
LABELS PER MINUTE\*  
\* Standard address labels

**300** DPI  
SHARP PRINTING

**NEW EASY PEEL LABELS**

MAKE LABELS UP TO **62mm WIDE**

**NO PAPER JAMS  
NO INK OR TONER NEEDED  
NO LABEL WASTAGE**



Always at your side

**DK LABEL**

**DK TAPE**

**The P-touch QL-550 includes:**

- 2 starter rolls
  - 1 x Die-cut standard address roll (100 labels, 29mm x 90mm)
  - 1 x DK Continuous Paper Tape roll (62mm x 8m)
- Quick Start Guide
- Label Catch Tray
- Cleaning Sheet (for print roller)
- CD Rom (Software/Driver/User Guide)
- AC Power Cord
- USB Cable

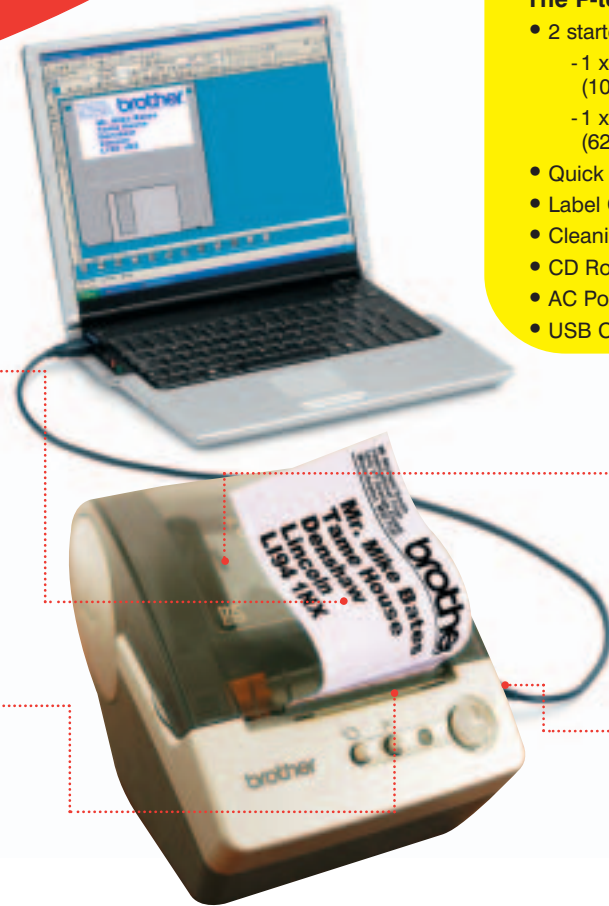
**A totally versatile labelling solution**

The Brother QL-550 makes it so easy to create customised labels for a wide variety of applications, including: files & folders, signage, envelopes & packages, badges, shelves, storage, retail, barcodes, CDs and videos.

**Two Easy Ways to Make Labels**

Direct thermal print technology eliminates toner, ink and ribbon costs

Autocutter  
Cuts labels quickly and smoothly  
QL-550  
**AUTOCUTTER**



Easy roll loading system  
Simply insert roll and you are ready to print

USB Port  
Connects easily to your PC

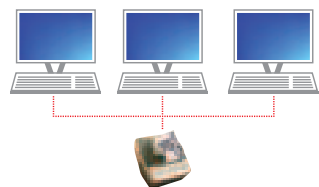
**The Brother QL-550 Label Printer. Faster, more versatile and easy to use – a new level of label printing performance.**

The Brother QL-550 Label Printer has taken label printing to new levels. Whether you need one label or many labels, it's the fastest, easiest and most versatile way to print labels directly from your PC. Perfect for printing address & shipping labels, banners & signage, this machine has **unique label flexibility** and can print on both **die-cut peel-off labels** or **continuous length tape**.

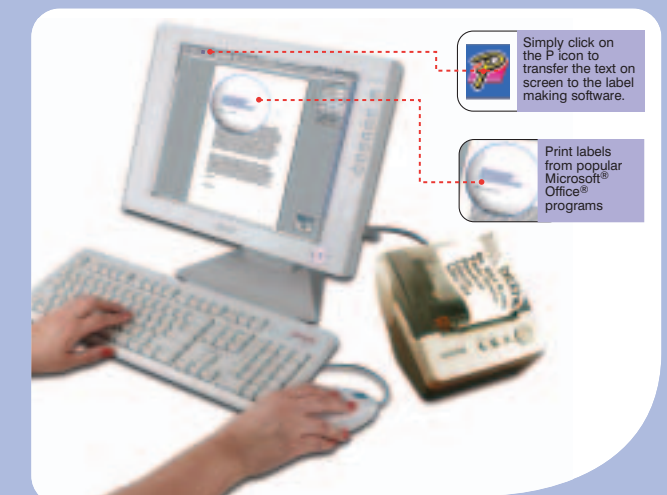
**Fast printing of high quality labels**

- ➔ Prints at speeds of up to 50 labels per minute\*
- ➔ Includes P-touch Editor software which allows you to create custom layouts with barcodes, graphics, true type fonts and special formatting (including frames and tables)
- ➔ Highlight, click and print option for quickly printing labels from popular Microsoft Office applications including Outlook®, Word® and Excel®
- ➔ Direct Thermal print technology eliminates toner, ink and ribbon costs
- ➔ Label Templates - for quick label creation
- ➔ Full network connectivity allows multi-user printing with optional PS-9000 print server.

\*Standard address labels



Create signage up to 24.8cm in height and 1m in length, by printing on four strips of continuous length tape.

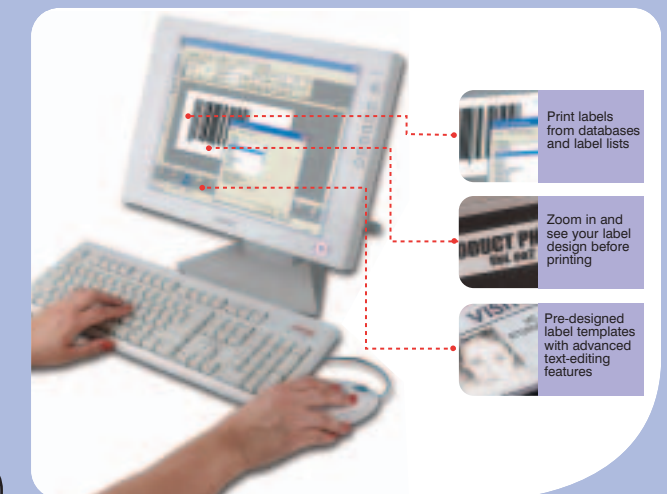


Simply click on the P icon to transfer the text on screen to the label making software.

Print labels from popular Microsoft® Office® programs

① Highlight, Click and Print  
(Print directly from Microsoft Word®, Excel® and Outlook®)

OR



Print labels from databases and label lists

Zoom in and see your label design before printing

Pre-designed label templates with advanced text-editing features

② Get creative and design your own labels with our label design software

