

**GLOBALMARK**<sup>™</sup>  
INDUSTRIAL LABEL MAKER



**THE ONE TOUCH  
SIGN SOLUTION**

# TOUCH SCREEN



**SEE WHAT YOU NEED,  
TOUCH THE SCREEN, CREATE  
YOUR MESSAGE.**

Creating on demand signs and labels in house has never been easier. Touch screen technology and the innovative Windows CE operating system\*, combine to give you unrivalled control of all your sign and identification needs. Create your layout on the screen, make any changes as you go and when you see what you finally want - press print, it's that simple! Designed with flexibility in mind, the Globalmark offers immediate sign and label solutions for all the needs of a modern, safety conscious industry.



No matter what the demands are in your work environment whether its in process, manufacturing, construction, transport, storage or public buildings, the Globalmark offers an endless range of solutions including safety signage, information, directions, warnings, equipment marking, maintenance labels and process marking. Well identified storage, clearly explained procedures, easily identifiable marking, Globalmark is a valuable tool designed to help you create a safer, more efficient working environment.



\*(Windows CE is a trademark of Microsoft Corp-USA).

# ALMOST LIMITLESS APPLICATIONS!

Globalmark integrates speed, ease of use and diversity. A system that can provide solutions in single colour, multiple colours and even multiple colours with a cutting function – all from the same, desktop device.

Technically, there are almost no limits to what you can produce. With Globalmark all of your sign and marking needs are at your finger tips in-colour, in-house and in-minutes!

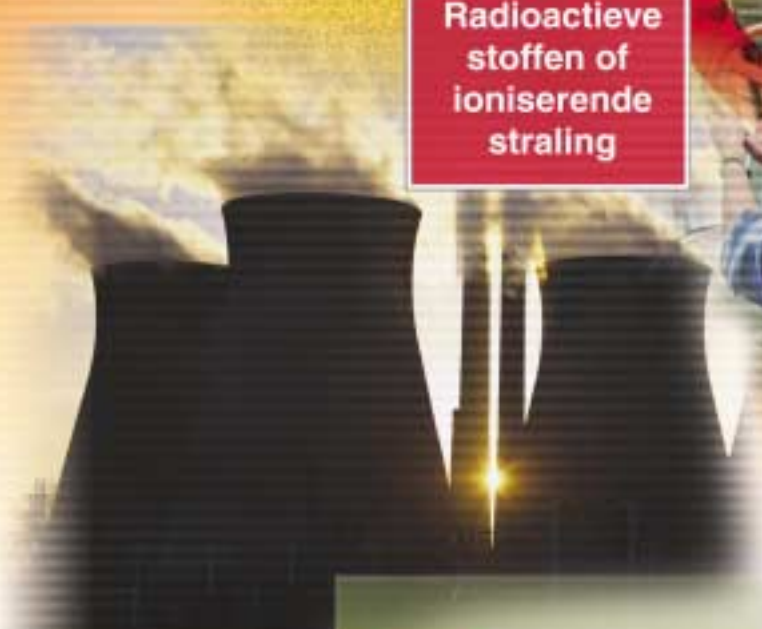
# GLOBALMARK™

INDUSTRIAL LABEL MAKER



## UNIQUE STAND ALONE OPERATION

One of the key advantages of Globalmark is that it can be used either with, or without a computer, giving equally high quality output but a greater level of portability and speed in its operation. Unique texts, pipe marking, safety signs, equipment tags, labels, fire and rescue, directional and information layouts are all built into the Globalmark. Moreover, with its own keyboard, mouse and PC connection (serial/USB), Globalmark is totally up to date with current leading - edge technologies. This flexibility in use has been optimised thanks to the MS ActiveSync program\*, which enables you to download graphics, logos and pictures from your PC and to print these directly from the Globalmark. Globalmark prints onto the extensive range of high quality Brady industrial supplies. All Brady high performance materials are designed to meet the exacting, and often harsh environments found in modern work environments. (MS ActiveSync is a registered trademark of Microsoft Corp-USA)



# PROCESS AND SPOT COLOUR

Globalmark offers two possibilities for printing colours. The first is **multiple -colour** printing (spot colour), enabling you to produce signs and labels that fully meet the standards required by safety legislations, for colour and required pictograms.

The second form is with its **full - colour** (process colour) technology, allowing the production of company logo's and more complex graphics.

With Globalmark, you have the flexibility to choose how to best display your colours!

\*(use with MarkWare 3.0 identification software and later)



# PRINT AND CUT FEATURE

Globalmark goes even further! With its own integrated print and cut feature, you can even "die cut" your chosen sign or label for greater impact and easier positioning.





- MONOCOLOR
- MULTICOLOR
- COLOR & CUT

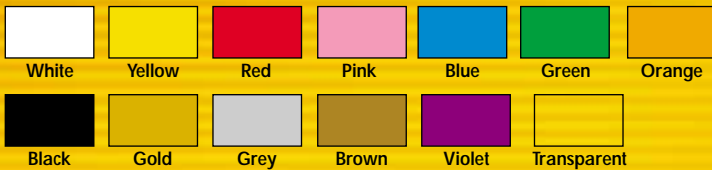
Brady offers a range of three Globalmark models to satisfy the unique needs of your working environment.



## MATERIALS (length 30 m)

Globalmark materials have a large range of colours and are available in sizes of 13, 29, 57 and 100 mm to match all your requirements and to give the highest performance in all environments.

### INDUSTRIAL:



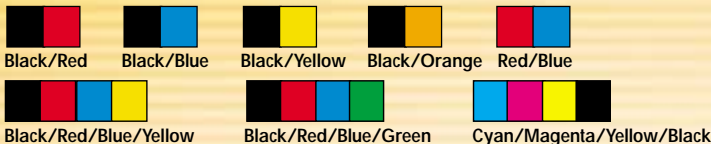
## THERMAL RIBBONS (length 60 m)

A large range of printing colours in two widths, 70 and 105 mm.

### • Monochrome



### • Multi-Colours - Panels: 200 and 400 mm long.



## SYMBOLS AVAILABLE

Over 700 preset symbols and formats



## TECHNICAL DESCRIPTION

- 11 Languages: English, French, German, Dutch, Spanish, Portuguese, Italian, Danish, Swedish, Norwegian, Finnish
- Multi colour printing (Multicolor and Color & Cut models)
- Integrated cut function (Colour & Cut model)
- Resolution 300 DPI
- Cut : automatically integrated
- Connectable to PC via Serial/USB port
- Downloadable Logos / Pictograms (WMF, BMP formats) via ActiveSync
- Port : USB, Series and PS2 (mouse and keyboard)
- Maximum print size : 100 mm, up to 360 mm when tiled
- Dimensions : 25 x 35 x 42 cm
- Weight: 13.5 Kg.

## MAIN CHARACTERISTICS

- Size of characters :** • Printable from 3 to 92 mm (up to 360 mm and 4 times when tiled) • 10 to 90 mm using cut feature.
- Other functions :** • Multiple lines of text. • Rapid text function (automatic adjustment of character sizes and size of material)
- Reverse Printing • Mirror printing (with MarkWare)
- Sequential printing • Length of print in monochrome up to 2.5 m
- Multicolour printing length up to 96 cm • Minimum label length: 5 cm.

Your Brady specialist



### Brady Corporation Ltd

14A, Wildmere Industrial Estate, Banbury, Oxfordshire, OX16 3JU  
 UK+ 44 (0)1295 228 272 - Fax : + 44 (0)1295 228 112  
 Internet : [www.markitpro.com](http://www.markitpro.com)  
 UK customer service Free phone & fax  
 Tel. 0800 072 94 72 - Fax: 0800 072 94 73